



WebCCTV NVR

Most Standards-Based Network Video Recorder on the Market

- **WebCCTV NVR** is a cost-effective network video solution that supports advanced functions and introduces a new dimension of reliability and performance into the world of security in an extremely user-friendly way.
- **WebCCTV NVR** is a high-quality solution that supports all possible standards and focuses on ease of use.
- **WebCCTV NVR** is a turnkey solution that consists of reliable hardware backed by an onsite warranty and optimally installed video management and operating system software.
- **WebCCTV NVR** 90% of all network cameras and 99.9% of analogue cameras sold on the market. As new cameras become available new camera drivers can be easily added on.



WebCCTV NVR*

*exclusive monitor

BASED ON DIGITAL STANDARDS

Since Quadrox replaced NTSC/PAL and VHS standards with 9 digital standards, WebCCTV NVR is the most standards-based network video recorder available on the market. As new standards emerge expect Quadrox to be the first to support them.

- Recording in ASF
- Variety of Standard Compressions Codecs
- OPC Based Alarm Handling
- SNMP (Simple Network Management Protocol)
- CAP (Common Alerting Protocol)
- UPnP (Universal Plug and Play)
- RTP/RTSP (Realtime Transport Protocol)
- Image Authentication using standard digital signatures
- NRF-ARTS IXRetail POSlog Standard

Freedom of choice after purchase

LONG-LASTING BENEFITS

- Future-proof integration - WebCCTV NVR is built on open standards and seamlessly integrates with existing solutions
- Easy, yet powerful system - utmost user friendliness combined with high performance
- Flexible and scalable - grows with user's needs and suitable for multiple applications
- Cost-effective - reduces labour and storage costs
- Remote access - accessible any time from any location
- Freedom to choose - compatible with more than 500 camera products sold on the market

Easy to Use and Install

Intuitive Wizards Guidance

With the intuitive wizards' guidance through the configuration processes WebCCTV NVR is easy to use even by an inexperienced user.

One-Click Network Camera Setup**

Automatic network camera setup enables convenient one-click setup for network cameras. New network cameras are configured and added automatically.

Worry Free Storage Management

WebCCTV NVR supports multiple storage volumes that allow the storage capacity to be extended and the disk load to be optimised. The relevance of the data is determined by age and metadata.



Innovations that make you safer

Advanced Recording

Permanent, activity-based, alarm triggered, etc. with each setting made on a per camera basis.

Instant Remote Access

Remote viewing of live or pre-recorded video from anywhere in the world via TCP/IP networks. No special client-side viewing software required.

Fast Image Retrieval

Retrieval of recorded video and the associated data of any event.

Virtual Patrol

Simulates a touring guard with time-controlled pan/tilt/zoom cameras rated for continuous motion.

Single Sign On

User Management is handled through the Windows User Management allowing single sign-on.

Health Monitoring Service

Immediate notification in the case of a system component fault.

Instant Remote Alarm Notification

Notification of the alarm via e-mail or SMS, and instant access to the alarm video footage.

Active-Directory User Management

Defines an unlimited number of password-controlled users with customised access privileges. Allows for tracking user's actions through advanced logging functions.

Advanced Logging

Complete and clear overview of all user and system activities and interactions.

Megapixel Video Data Transmission over Low Bandwidth

Megapixel network camera data transmission over low bandwidth for both live view and recordings. This feature gives the option to choose high or low bandwidth depending on the available bandwidth and/or the necessity of detail in both live images and recordings.

Multiple Live Viewing Models

Live camera images in single view or in up to 9 user configurable mosaic views. View cameras continuously or sequence them per viewer reference.

Masking and Activity Detection

Maximise storage space using sophisticated masking in combination with graphically represented activity threshold levels.

** Depending on camera type

WebCCTV NVR 10/16/20 with Optional 4/8/16/20 Analogue Inputs

SPECIFICATIONS

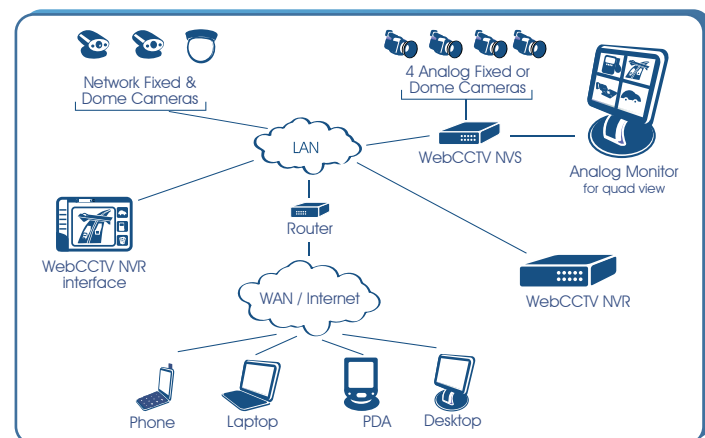
Total Video Inputs	Maximum 20 cameras (connect up to 10/16/20 cameras in total)
Analogue Video Inputs	up to 4/8/16/20 analogue cameras*
Resolution	Support for high resolution Megapixel cameras
Record Modes	Motion detection, continuous or event triggered
Motion Detection	Recorder or camera based
Simultaneous frame rate per camera**	Network: 30 frames/sec/camera Analogue: 5 frames/sec/camera
Logbook Function	Documentation of all error messages, logins and other security relevant parameters
Remote Client Software	Web based, installed upon first remote access
Search Criteria	Date, time, camera number, event, alarm, individual customer data, individual adaptations are available on request
Quality and Bandwidth Control	Adjustable video compression rate, frame rate and resolution by camera
Operating system	Windows XP Embedded
Supported Languages	English, German, French, Italian, Dutch, Spanish, Russian

CAMERA SUPPORT

Cameras supported	network and analogue, fixed and dome cameras, like ACTi, Arecont, Axis, Ernitec, GE, Mobotix, IQeye, Panasonic, Sony, Toshiba, WebCam, Zavio, etc (more detailed information can be found in Supported Camera List).
--------------------------	---

WARRANTY***

3 year on-site next business day for standard IP-based models provided by HP certified technicians. The warranty is extendable up to 5 years and upgradable to 4 hour on-site intervention.



Storage

Storage capacity	1 TB (can be extended up to 2.0 TB)
Backup Device	Internal DVD-R/RW

PROCESSOR

Processor	i5 processor
System memory	2 GB RAM

INTERFACES

LAN	LAN/Ethernet (10/100/1000 Mbit), RJ45
Serial	RS-232
VGA	VGA adaptor and DVI-A (Dual Link)
USB	8 USB 2.0 ports (2 front, 6 rear)
USB	Mouse/Keyboard included
Audio	1 headphone/line-out 1 microphone in

COMPONENT HEALTH SERVICE

Software watchdog
SNMP based System Health Service

AMBIENT

Temperature	5-40° C
Relative Humidity	5-95 % H, non-condensing
Altitude	0-3,048 meters

DIMENSIONS

W x D x H	17.8 x 45.2 x 44.8 cm
Weight	11.88 kg

HARDWARE OPTIONS

USB I/O Device 24 Alarm Inputs/Outputs

CERTIFICATION

WebCCTV NVR is compliant with the new BS8418 security standard.



* Via Network Video Server

** Network cameras depending on camera specifications. Analogue cameras in all video resolutions.

*** The on-site warranty is given on WebCCTV NVR hardware excluding digitiser cards.

PRODUCT CODES:

WebCCTV NVR10
WebCCTV NVR10 A4
WebCCTV NVR10 A8

WebCCTV NVR16
WebCCTV NVR16 A4
WebCCTV NVR16 A8
WebCCTV NVR16 A16

WebCCTV NVR20
WebCCTV NVR20 A4
WebCCTV NVR20 A8
WebCCTV NVR20 A16
WebCCTV NVR20 A20

WebCCTV NVRa Ab, where
a - total cameras licensed (10, 16, 20)
b - number of analogue cameras supported (0, 4, 8, 16, 20)



Options

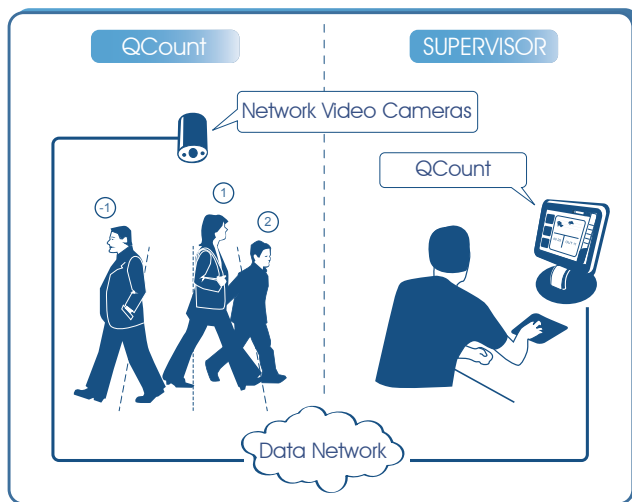
QCount

QCount is a solution that delivers accurate store occupancy data. It consists of a network camera with an on-board counting algorithm. The counting data can be sent to either a local or a headquarter-based server. Graphical occupancy/activity reports are generated based on this data.

Implementation of QCount

- enhances workforce management
- improves customer service
- optimises advertising budgets
- reduces staffing costs

More detailed information can be found in [QCount brochure](#).



QPOS Link

QPOS Link is a specific video solution that matches surveillance video of the area around POS with POS transaction data such as: receipt information, transaction IDs, item numbers, register numbers, employee numbers, location or amounts. It allows you to detect suspicious transactions and possible fraud scenarios and reduce shrinkage by organising efficient monitoring of the POS area.

When using QPOS Link customers benefit from

- shrinkage reduction
- increased productivity and staff confidence
- improved store management
- quick return on investment.

More detailed information can be found in [QPOS Link brochure](#).

