

# KB-0057-Change keyboard localization

## GENERAL

<b>Distribution</b>	<b>OEM/Partner/Distributor</b>	<b>Installer</b>	<b>Customer</b>
	YES	YES	YES
<b>Last Update</b>	06-02-2009		
<b>Product</b>	WebCCTV, GuardDVR/NVR		
<b>Version</b>	All		

## DESCRIPTION

By default the keyboard layout is English (USA). This means it is in QWERTY. Some countries use an AZERTY layout. You can change this layout in the control panel of Windows. Unfortunately Windows doesn't take over automatically this layout for its logon screen during start up. This article explains how to change the keyboard settings exactly in order to have an AZERTY keyboard at all times. This procedure can be used for any language.

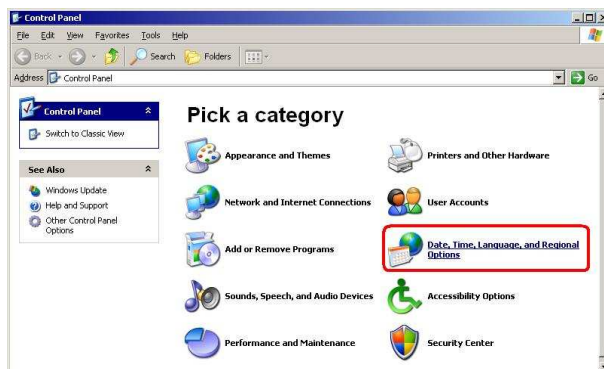
## SOLUTION

If you got a WebCCTV Video Server, you can change this very fast by going to the **Support folder** on the desktop and double clicking the Icon **Dutch (Belgian) Keyboard**. For GuardNVR please execute following steps (also possible on WebCCTV OS):

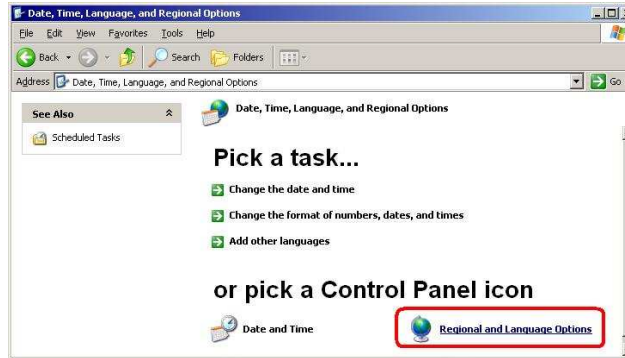
1. Go to **Control Panel** of Windows.



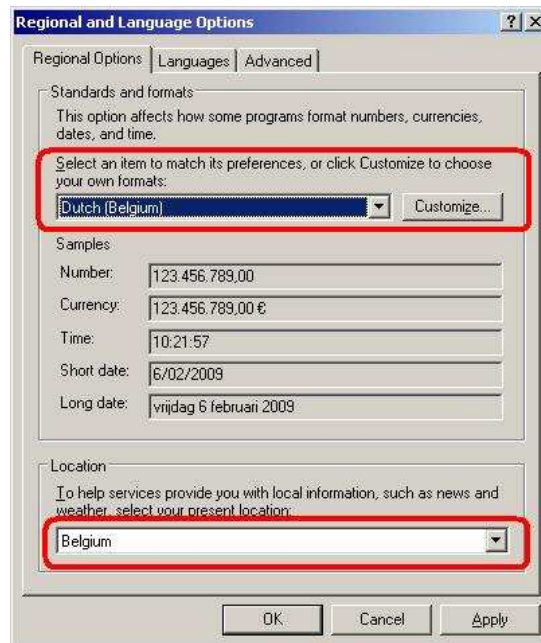
2. Open "Date, Time, Language, and Regional Options".



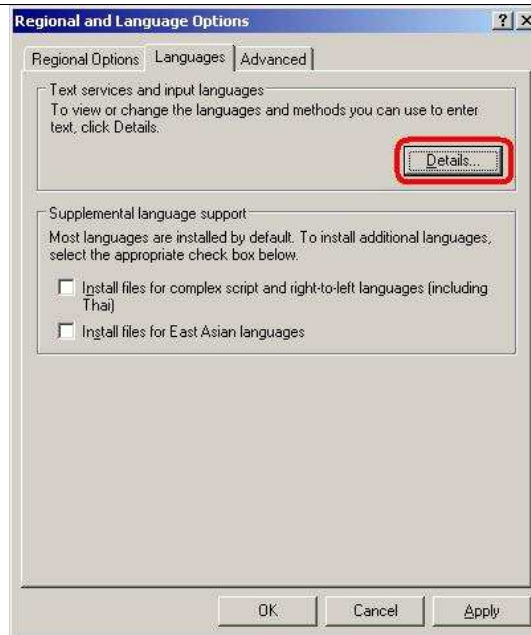
3. Open “Regional and Language Options”.



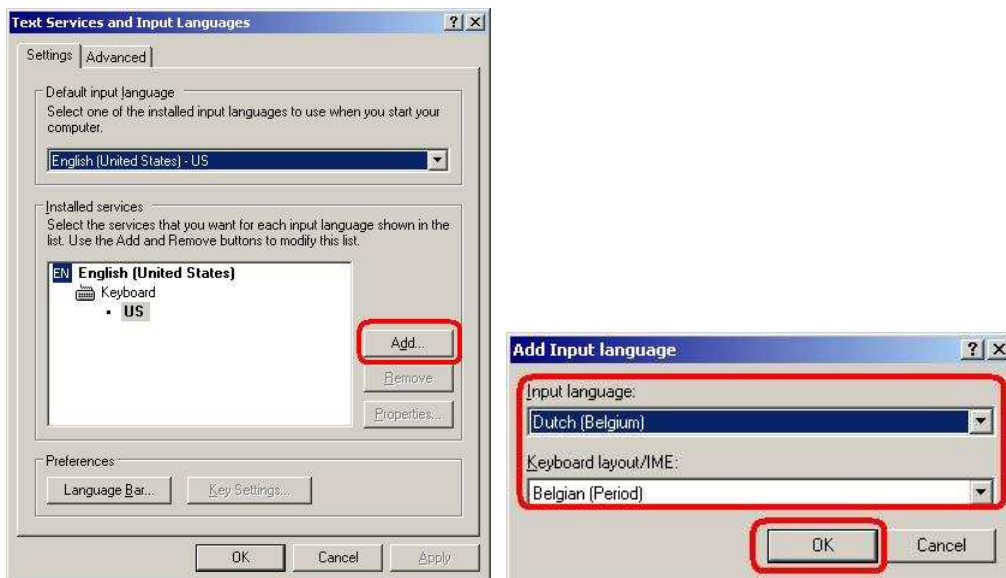
4. Change on the Regional Options tab the Standards and formats and Location section to your desired configuration.



5. Click **Details...** on the **Languages** Tab.



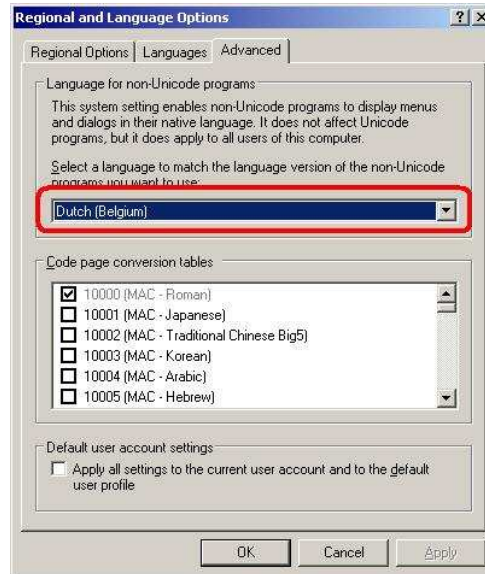
6. Click **Add**, select your **input language** and **Keyboard layout/IME**. Click **OK**.



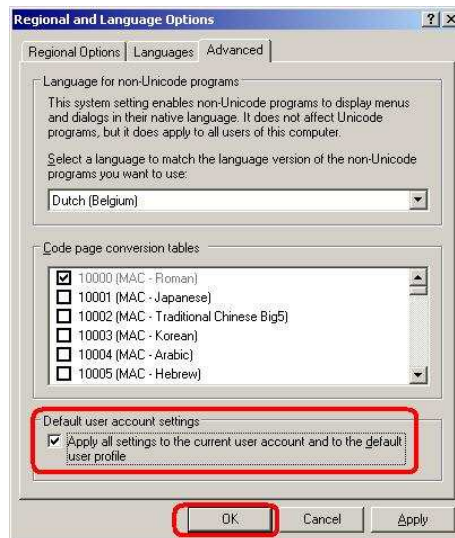
7. Change the **Default input language** on the Settings tab and click **OK**.



8. Change the **Language for non-Unicode programs** on the **Advanced** tab.



9. Enable the **Default user account settings** check box. Click **OK** in the pop up window. Then click **OK** in the Regional and Language Options screen.



10. Click **Yes** in the pop up Window and click **Yes** when it asks to reboot your computer.





When the computer has rebooted, your language and keyboard settings will have changed.