

KB-0059-Quick change keyboard localization

GENERAL

Distribution	OEM/Partner/Distributor	Installer	Customer
	YES	YES	YES
Last Update	10-02-2009		
Product	WebCCTV, GuardDVR/NVR		
Version	All		

DESCRIPTION

By default the keyboard layout is English (USA). This means it is in QWERTY. Some countries use an AZERTY layout. You can change this layout in the control panel of Windows. Unfortunately Windows doesn't take over automatically this layout for its logon screen during start up. This article explains how to change the keyboard settings in order to have an AZERTY keyboard also at the logon screen of Windows. This procedure can be used for any language.

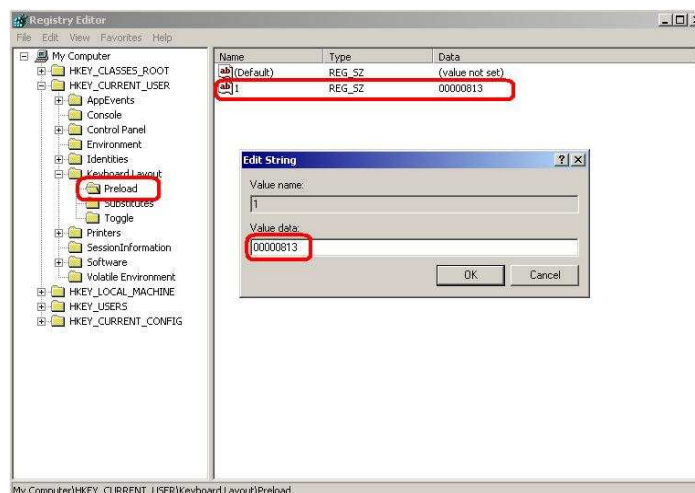
SOLUTION

Please perform the following simple registry change:

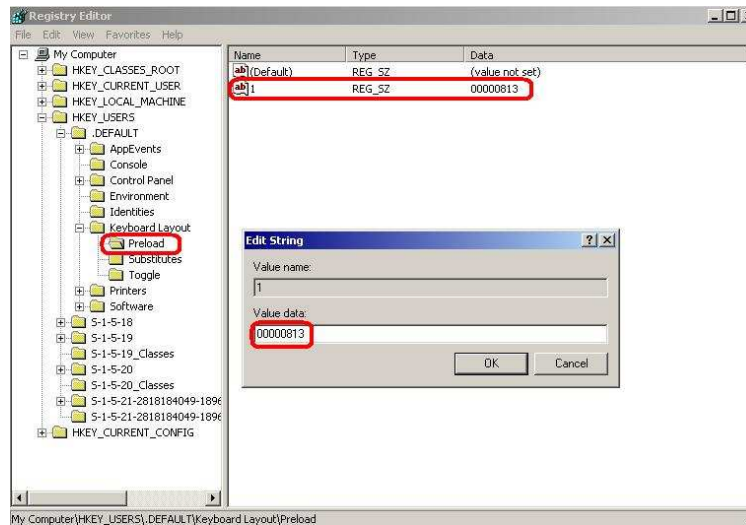
- Open the Registry Editor. **Start** → **Run**, type **regedit** and click **OK**.



- Locate the code for your current (changed) layout:
 - Navigate to the [HKEY_CURRENT_USER\Keyboard Layout\Preload] key.
 - Double click on the "1" item in the right pane and change the value to your keyboard language. Click **OK**. See at the bottom possible values for some languages.



- Now change the default layout:
 - Navigate to the [HKEY_USERS\DEFAULT\Keyboard Layout\Preload] key. (Attention: there is a dot (.) before DEFAULT!)
 - Double click on the "1" item in the right pane and change the value to your keyboard language. Click **OK**. See at the bottom possible values for some languages.



- Restart unit.

Your logon screen keyboard layout is now changed in the one you configured.

Remark: The leading zeroes are important! If the code is "00000813" you need to enter the "00000813" code as well.

List of common used layout codes:

- 00000406 - Danish
- 00000413 - Dutch (Standard)
- 00000813** - Dutch (Belgian)
- 00000409 - English (United States)
- 00000809 - English (United Kingdom)
- 0000040b - Finnish
- 0000040c - French (Standard)
- 0000080c** - French (Belgian)
- 00000407 - German (Standard)
- 00000408 - Greek
- 00000410 - Italian (Standard)
- 00000814 - Norwegian (Nynorsk)
- 00000816 - Portuguese (Portugal)
- 00000419 - Russian
- 0000040a - Spanish (Traditional Sort)
- 0000041d - Swedish

Remark: Actually Windows handle all this stuff correctly itself, if you mark the "Apply all settings to the current user account and to the default user profile" checkbox on the "Advanced" tab of the "Regional and Language Options" applet, when you select another language (for non-Unicode programs). But direct registry change is a faster way to fix the layout.