

KB-0074-Create Custom Mosaic Template

GENERAL

Distribution	OEM/Partner/Distributor	Installer	Customer
	YES	YES	YES
Last Update	27-03-2009		
Product	WebCCTV, GuardNVR/DVR		
Version	4.0.4.0 or higher		

DESCRIPTION

It's possible to create a template for any mosaic configuration that is not available by default. E.g. to create the template for the mosaic 5x5, 2+Zoom, etc. The following templates are available by default:



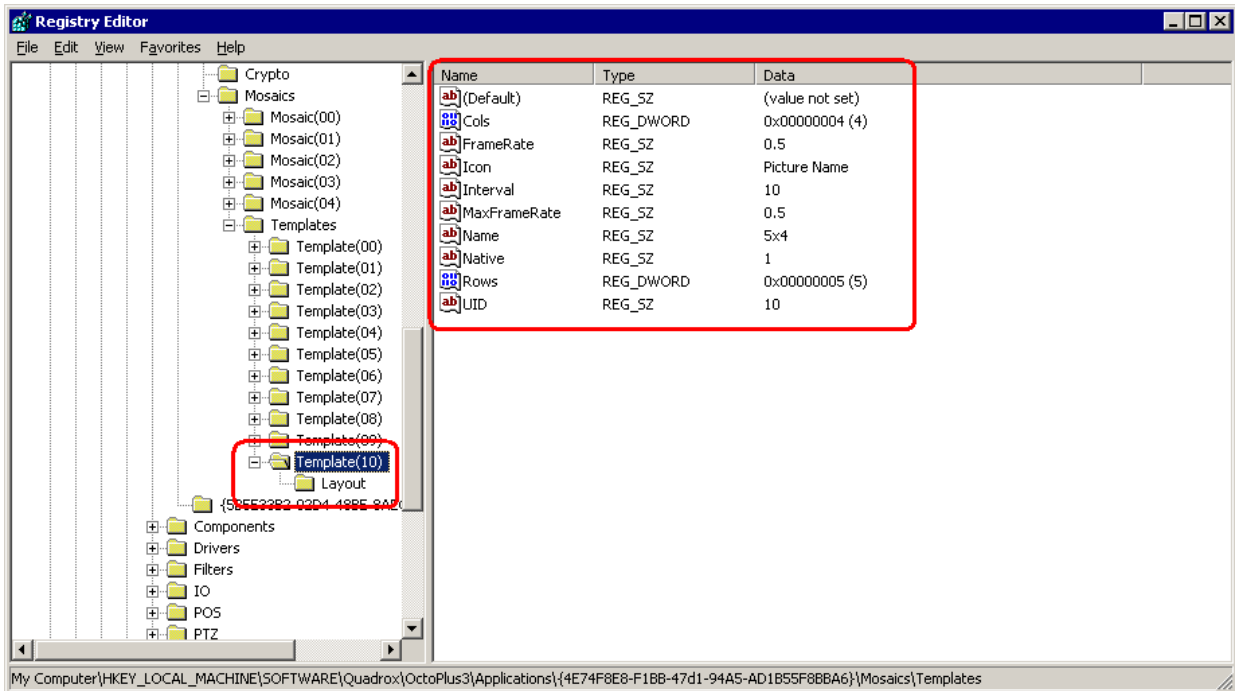
SOLUTION

To create a template, a new registry branch and a list of keys has to be added in the registry. Please execute the steps below:

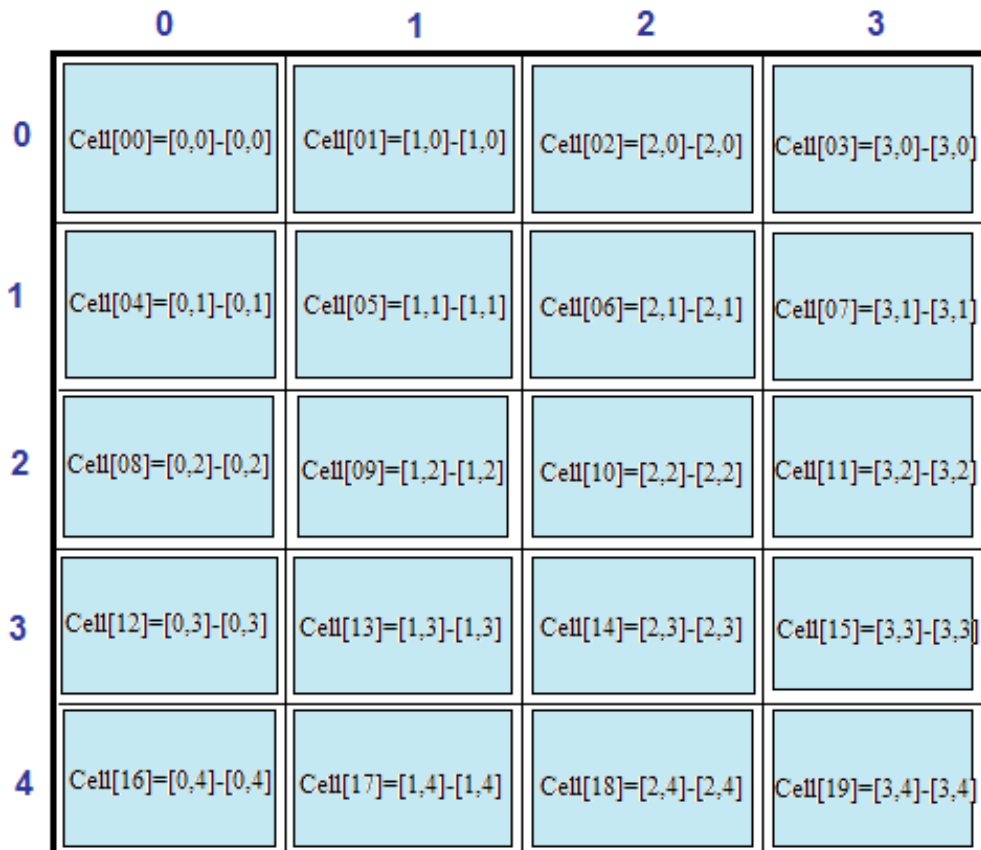
- **Stop** Video Server.
- Go to **Start** → **Run...** → **cmd**, type **regedit** and **enter**. Locate the following registry key: [HKLM\SOFTWARE\Quadrox\OctoPlus3\Applications\{4E74F8E8-F1BB-47d1-94A5-AD1B55F8BBA6}\Mosaics\Templates](#)
- Right click on this folder, select **New** → **Key**. Name it as following: *Template(xx)*, where xx is the number of the template. E.g. if the last available template is 'Template(08)', then you should create the key 'Template(09)'.
- Click right in the right pane and add the following parameters by selecting **New** each time:
 - **DWORD** Values:
 - ✓ Name: **Rows**. Base: **Hexadecimal**. Value data: [Amount rows]
 - ✓ Name: **Cols**. Base: **Hexadecimal**. Value data: [Amount columns]
 - **STRING** Values:
 - ✓ Name: **Name**. Value data: [Mosaic name in User Interface].
 - ✓ Name: **FrameRate**. Value data: [Default frame rate mosaic].
 - ✓ Name: **MaxFrameRate**. Value data: [Maximum frame rate mosaic].
 - ✓ Name: **Icon**. Value data: [Picture name that will be used]. This picture will be used as icon for the mosaic. The default path to place the picture is:
[C:\Program Files\Quadrox\WebCCTV\webManager\ImagesQ](#)
 - ✓ Name: **Interval**. Value data: [Default time (seconds) between switching sequences].

- ✓ Name: UID. Value data: [Position mosaic on Mosaics configuration page].
- ✓ Name: Native. Value data: 1

Your screen structure should look similar to the structure in the following screen:



- Right click on your newly created Template(xx) folder and create a key named **Layout**.
- In the key *Layout* you should list all cells that your mosaic will include. Below is a scheme that explains how to numerate the cells:



Example: You want to create a mosaic 4x5. For this mosaic you need to create 20 String Values. For each of the strings you have:

- Name: **Cell[xx]**, where xx – is the number of cell (starting from 00 and up).
 - Value data: **[x1,y1]-[x2,y2]**, where x1, y1 – coordinates of the cell's beginning, x2, y2 – coordinates of the cell's ending. If the cell contains only one sector, the starting and ending coordinates are the same.
 - For example, the Cell[09] contains one sector, so both coordinates are [1,2].
- **Start Video Server.**