

# KB-0129-Changing the default port of IIS

## GENERAL

<b>Distribution</b>	<b>OEM/Partner/Distributor</b>	<b>Installer</b>	<b>Customer</b>
	YES	YES	YES
<b>Last Update</b>	4-06-2010		
<b>Product</b>	WebCCTV, GuardDVR, GuardNVR, IQR		
<b>Version</b>	All		

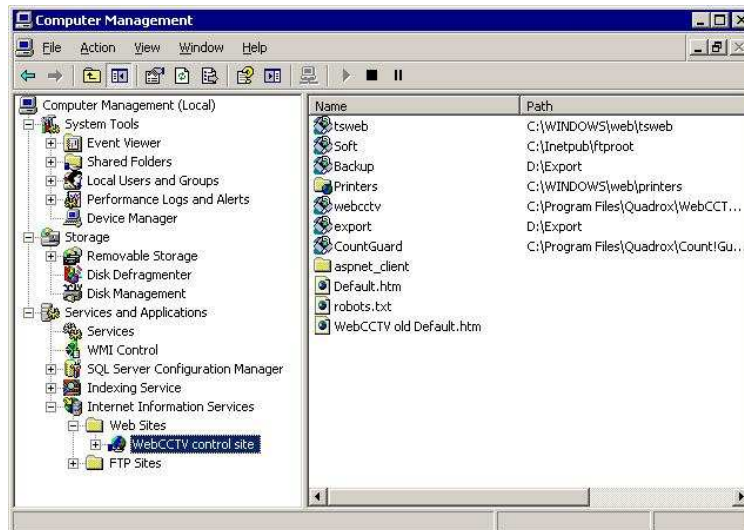
## DESCRIPTION

If you want to use a different TCP port as 80, for example port 11980, you need to change it in the IIS service settings.

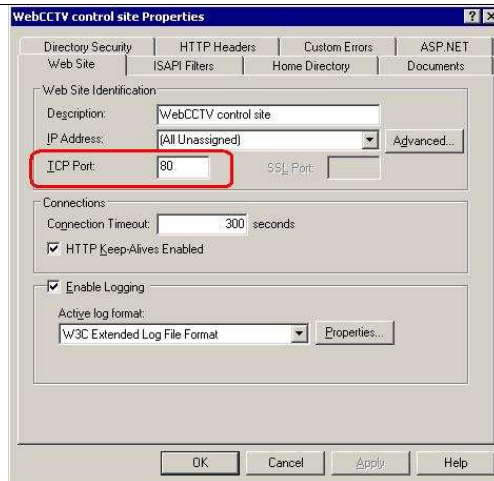
## SOLUTION

To do this, please follow the steps below:

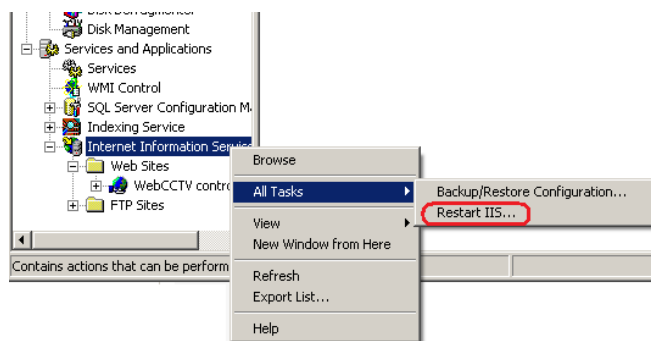
- Right mouse click on **My Computer**. Select **Manage**
- **Navigate** to Services and Applications → Internet Information Services → Web Sites → WebCCTV control site:



- Right mouse click and select **Properties**. Change the port in TCP Port field



- **Restart the IIS Service:**



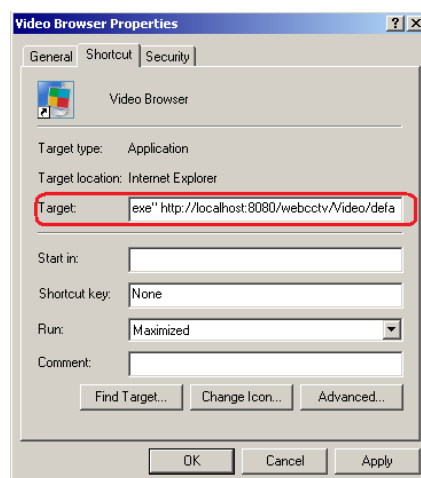
After performing these changes the Video Manager and Video Browser shortcuts on the desktop won't work, as port 80 is used in the shortcut. To fix the shortcuts, please follow the steps:

- Right mouse click on the shortcut and select **Properties**
- **Type** colon and the new port after the address of the server. By default the target is:

"C:\Program Files\Internet Explorer\iexplore.exe" http://localhost/webcctv/Video/default.asp

The new one will look the following way:

"C:\Program Files\Internet Explorer\iexplore.exe" http://localhost:8080/webcctv/Video/default.asp



- **Click Ok**